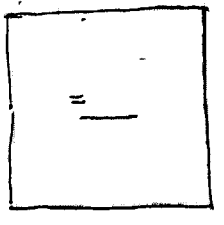


CASING
of 1/2" seam

tape gathered

add 1/4" or less
seam

fold or
seams & batted
1/8"



NO SEAM allowance

casing
inside

take
1/4"

1/2" seam

1/2" seam

add 1/4" for
collar

unfinished join

edge finished
by casing

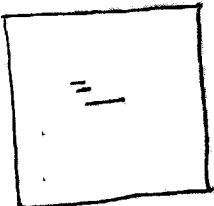
No need to hem / unfinished

stroke
gather
1/8" to 3"

allows
seams
by 1/4"

casing
finished
edge

stroke
gather
(raw edges)

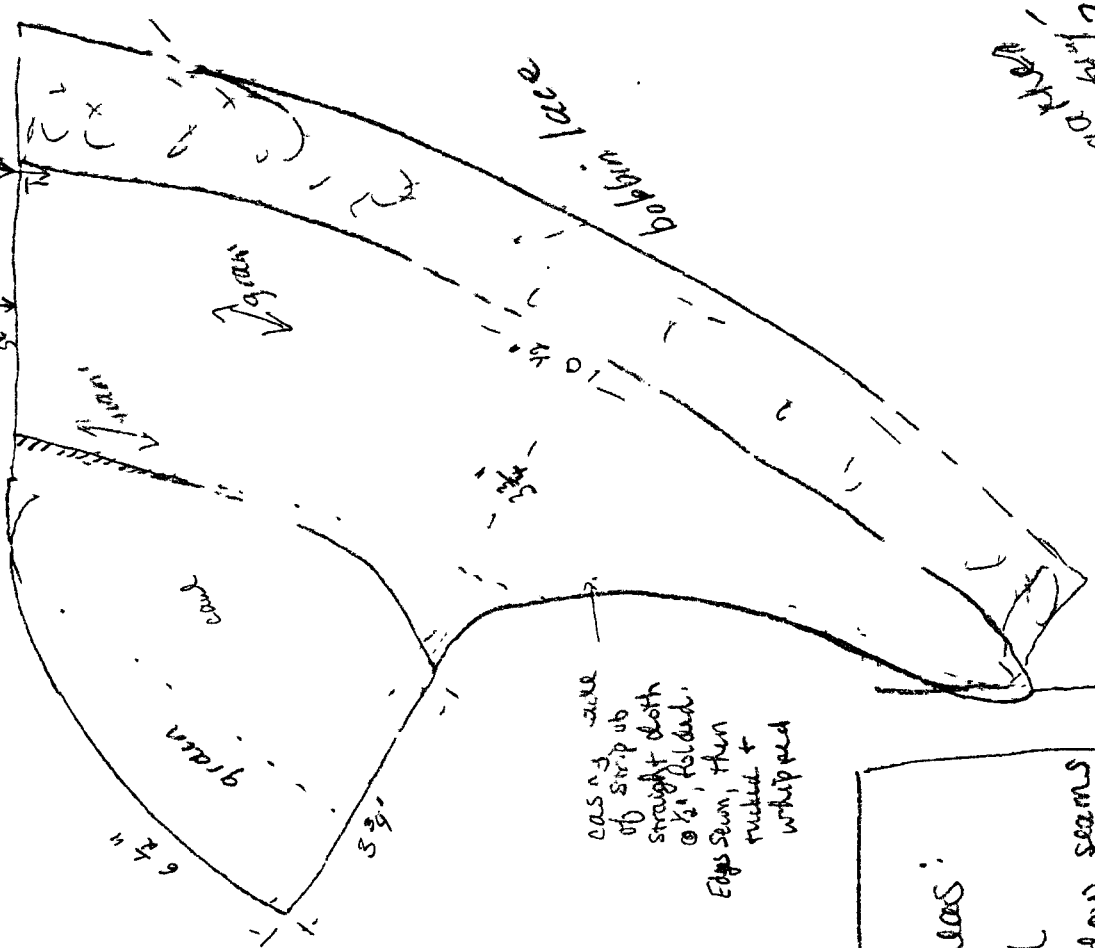
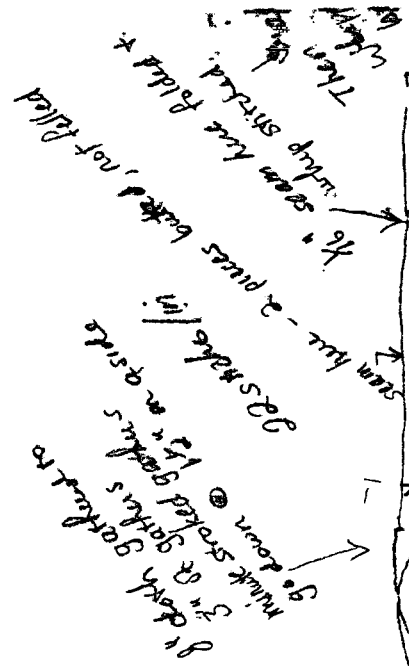
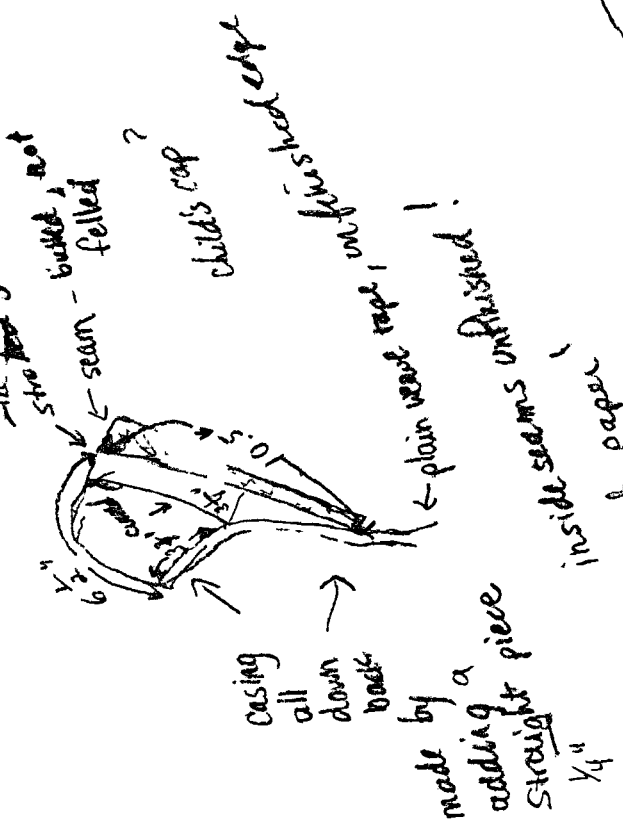


fold

3/4"

Boston MFA
 12.20.12

49.5.66 - minute garter go down



101/101 + 101/101
 101/101 + 101/101
 101/101 + 101/101

(Staron?)
 Barb says s... her ideas:

- | | |
|--------------------|----------------|
| lattice | later |
| v. small seams | shadow seams |
| stroked garters | rolled whipped |
| tape | String |
| straight lines | curved lines |
| mult ruffled linen | Cotton |