

1/2" wide seam  
at right

hemmed when  
buttoned together

band 1 1/2" top

gathers  
come down  
3"  
20 stitches/in

DAR

hem turns  
into RUG  
hole

but this seam is whiped

5" down =  
2" across

straight  
grain

6 1/2" =  
3 1/4" across

1/4" casing

2 turned  
holes  
for  
string

strings are 3/32" tapes -  
ends not finished

This is really small  
South?

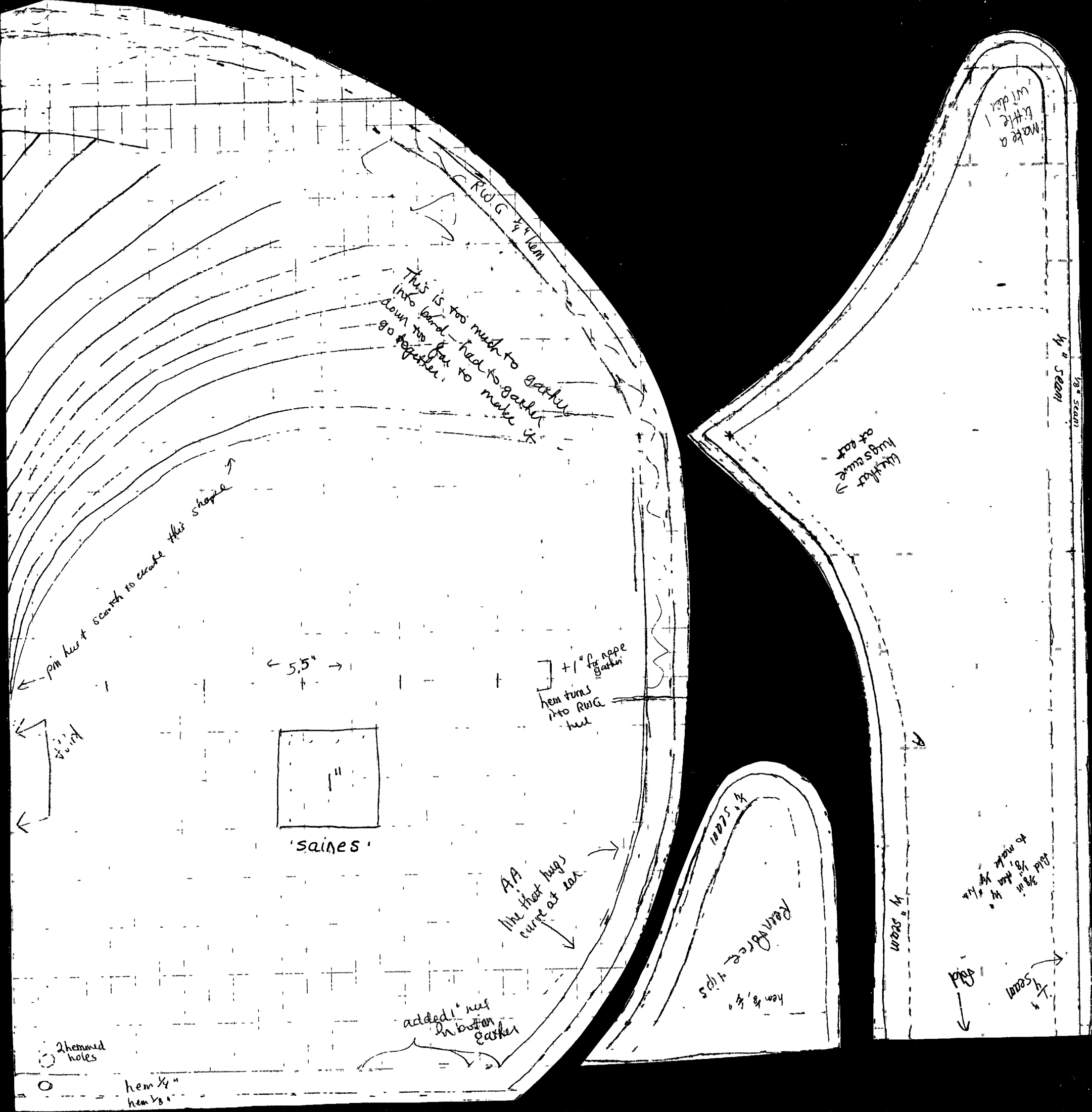
altered up  
to 2 1/4"  
add a  
point to  
back  
of  
9" holes  
up each  
side  
1/2" seam line

1 1/2" wide  
at  
point

seam of up  
in gather  
hole

largest  
point - measuring  
width

203



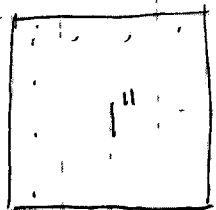
RW.G 1/4 hem

This is too much to gather into band - had to gather down too far to make it go together

pin hem + seam to create this shape

5.5"

+1" for nepe gather  
hem turns into RW.G hem



'sains'

AA line that hugs curve of ear

added 1" net in bottom ear

Make a little wider

line that hugs curve of ear

add 3/8" to make 1/2"

Remember 1/4" hem 3/4"

add 1/4"

2 hemmed holes

hem 1/4"  
hem 3/8"

1/4" seam  
1/8" seam

1/4" seam

1/4" seam

Ruffle front, Finish to 1/4" hem

This needs to be larger! Not enough room to gather enough around points leaves wrinkles

whip, then butt to front

CFI  
fold

www Rida www

www Rida www

www Rida www

1/4" hem

whipped hem